



GAT MONTHLY MEMBERSHIP PROGRESS REPORT

Results as of: 12/31/2020

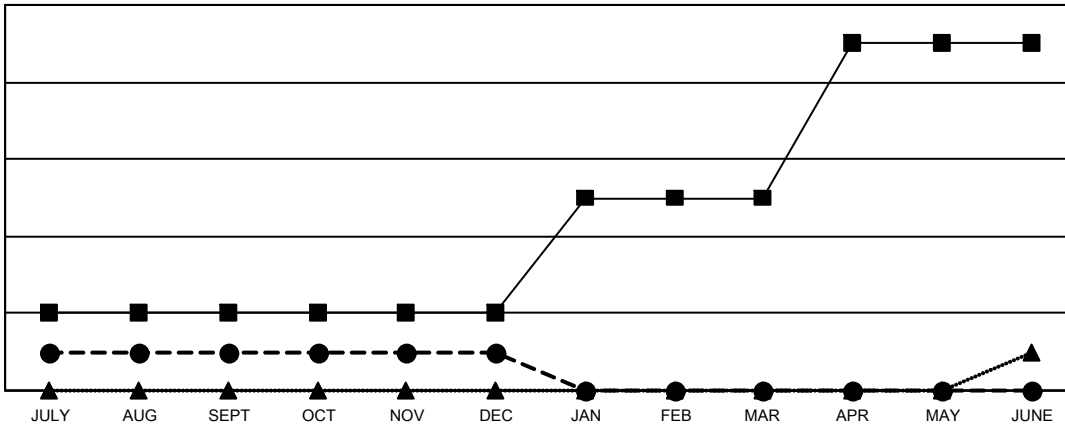
Multiple District 110

LOCATION: NETHERLANDS

| Clubs | | | |
|-----------------------|---------------|-----------|---------------|
| RESULTS FOR 2020-2021 | | | |
| QUARTER | NEW CLUB GOAL | NEW CLUBS | DROPPED CLUBS |
| JULY/AUG/SEPT | 2 | 1 | 1 |
| OCT/NOV/DEC | 0 | 0 | 0 |
| JAN/FEB/MAR | 3 | 0 | 0 |
| APR/MAY/JUNE | 4 | 0 | 0 |

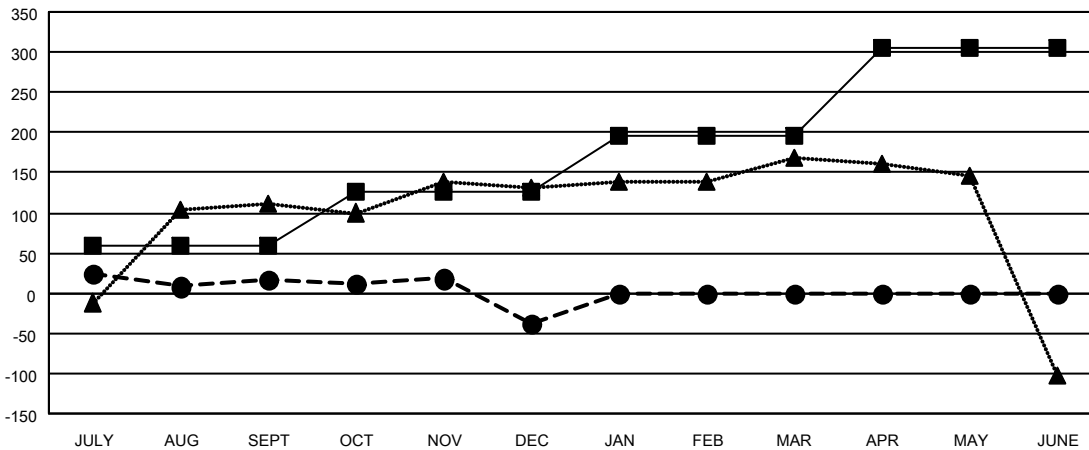
| Members | | | |
|-----------------------|------------------------|----------------------|----------------------------------------------|
| RESULTS FOR 2020-2021 | | | |
| QUARTER | MEMBER GROWTH NET GOAL | MEMBER GROWTH ACTUAL | DROPPED MEMBERS ACTUAL (including transfers) |
| JULY/AUG/SEPT | 58 | 151 | 110 |
| OCT/NOV/DEC | 68 | 149 | 143 |
| JAN/FEB/MAR | 70 | 0 | 0 |
| APR/MAY/JUNE | 110 | 0 | 0 |

GOALS AND ACTUAL NEW CLUBS CUMULATIVE



- - CURRENT YEAR GOALS FOR NEW CLUBS
- - CURRENT YEAR ACTUAL NEW CLUBS
- ▲ - LAST YEAR ACTUAL NEW CLUBS

GOALS AND ACTUAL MEMBERS CUMULATIVE



- - MEMBER GROWTH NET GOAL
- - MEMBER GROWTH ACTUAL
- ▲ - LAST YEAR MEMBERSHIP ACTUAL

| | |
|------------------------|------------|
| DROPPED CLUBS: 1 | |
| <u>DROPPED MEMBERS</u> | |
| DECEASED | 28 |
| CLUB CANCELLED | 0 |
| OTHER | 225 |
| TOTAL | 253 |

101 CLUBS OF 436 ADDED 1 OR MORE NEW MEMBERS

[CLICK HERE FOR CUMULATIVE MEMBERSHIP DATA](#)

| | |
|---------------------------------|----------------|
| <u>GENDER DISTRIBUTION</u> | |
| MALE | 9,207 (84.87%) |
| FEMALE | 1,641 (15.13%) |
| TOTAL FAMILY UNIT MEMBERS | 10 |
| FAMILY MEMBERS PAYING HALF DUES | 5 |